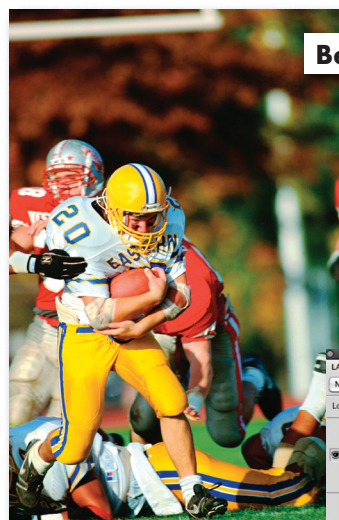


A cool way to cut a photo

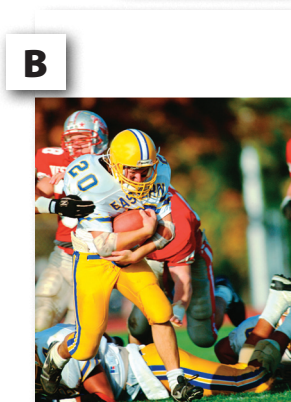
Saw this recently during a Photoshop TV podcast and I thought it was a quick, down and dirty way to create a cool page layout. It would make a great single-page divider, don't you think?

Here's how:

1. Open the photo you want to use. It will help if there is some area in the photo above the action. In the case of the football photo I have chosen, there is a large area above the actual players.
2. Create a new layer on top of the football layer by clicking the New Layer button at the bottom of the Layers panel. (Figure A) You can rename the layer White Rectangle if you want.
3. Using your Marquee tool, create a white rectangle that uses up the area above the football players. (Figure B)
4. Grab your Type tool and type one or two words. In this case, I typed Fall Sports. Make sure that your type layer is above your white layer.
5. Type Command (Control/PC) T to go into Free Transform mode. Stretch your type so it not only fills the white box but goes out into the photo.
6. Double click on the layer icon for the type layer in the Layers panel. (Figure C) This will load the type as a selection.
7. Click on your white rectangle layer and type Backspace or Delete.
8. Click the visibility icon for your type layer (the little eye on the left in the Layers panel) to make the type layer invisible.
9. To add some great final touches, double click the white rectangle layer in the Layers panel and when the Layer Styles dialog box opens, first click Drop Shadow.
10. In the Drop Shadow dialog area choose 20 for Distance, 10 for Spread and 20 for size. (Figure D).
11. Then click Inner Shadow to add an inner shadow. The default inner shadow should look good and work well.
12. Save a copy of the photo as a JPEG and upload it to YTO or place it in InDesign with Picture Placer.



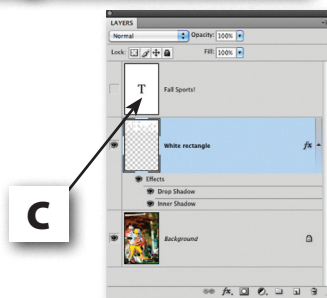
Before



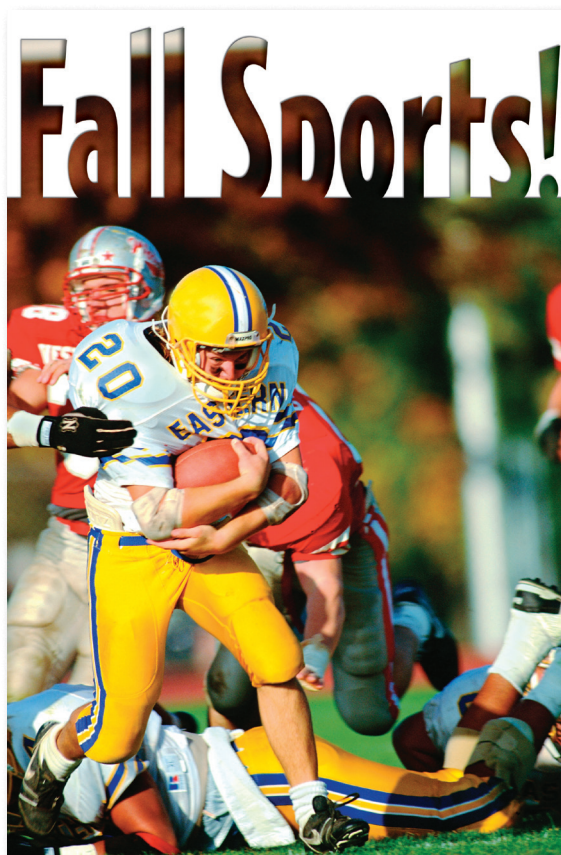
B



A



C



D

